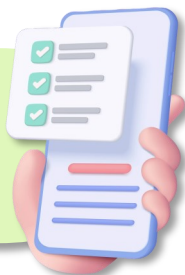


Rise is a powerful loan payment collection module developed by a credit union using member input! Rise provides a fast and simple way to collect payments that helps reduce delinquency and improve the member experience. It also allows a credit union to receive payment from another institution!

### **Convenience At Your Fingertips!**



### **The What**

Maximize member convenience and self-service with credit cards, debit cards, and ACH.

### **The Where**

User-friendly platform designed by credit unions. With this web-based platform, members can login from anywhere!



### **The Magic Of Digital Payments!**

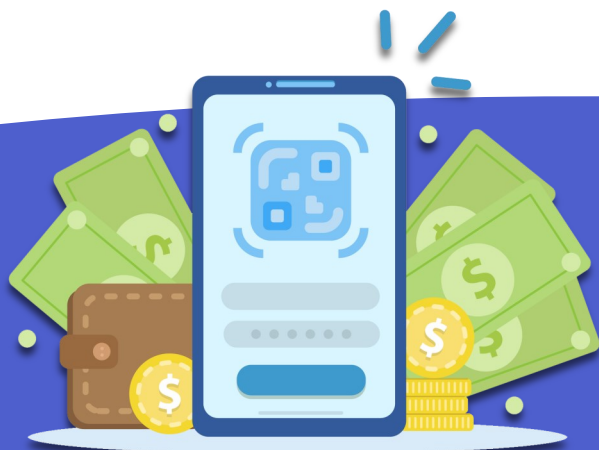
### **Easy Pay Anywhere!**



### **The Why**

- Contactless payments!
- Reduces delinquency!
- Administrative portal!
- Designed by credit union peers!

***CU\*Answers will send a daily loan file!***



### **Ready to get started?**

Check out the [Lender\\*VP Payment Solutions store](#)  
Or contact Lender\*VP at [lendervp@cuanswers.com](mailto:lendervp@cuanswers.com)